



AUTOMOTIVE, TOOLS & SHOP

EQUIPMENT & ACCESSORIES

950 Hoff Road

O'Fallon, MO 63366

Ph: 636.532.9888 Fx: 636.537.1055



Adjustable Roller Seat

- 360° Swivel Seat With Thick Foam Padding
- Seat Height Adjusts From 16" -20"
- 15 Inch Diameter Tool Tray, Steel Construction
- Weight Capacity: 300 Pounds
- Hydraulic Lift, 5 Heavy Duty Swivel Casters



Pkg. Type Color Box

Item	UPC	Case Qty.	Case Wt.	Cubic Ft.
ARSEAT	0 27077 05865 9	4	55.0 lbs	3.47

14 Foot Utility Chain

- 5/16" x 14 Foot Grade 43
- Clevis Grab Hooks At Both Ends
- Working Load 3900 Lbs
- Breaking Load 9700 Lbs
- Proof Test Load 4900 Lbs



Pkg. Type Blow Mold

Item	UPC	Case Qty.	Case Wt.	Cubic Ft.
TOW14	0 27077 03609 7	3	43.0 lbs	.77

40 Inch 6 Wheel Molded Creeper

- Creeper Rests 4" Off The Ground
- Heavy Duty Plastic Body
- Padded Foam Head Rest
- 3" Wheels Rotate A Full 360°
- Low Profile



Pkg. Type Color Box

Item	UPC	Case Qty.	Case Wt.	Cubic Ft.
CREEP40	0 27077 05882 6	1	13.0 lbs	1.8

1000 Lb Engine Stand

- Holds Most Standard V8 Automobile Engines
- 360° Rotating Head With 4 Adjustable Fingers
- Solid Steel 360° Swivel Crown Casters



Pkg. Type Color Box

Item	UPC	Case Qty.	Case Wt.	Cubic Ft.
ES4W	0 27077 04588 8	1	50.3 lbs	1.2

1 Ton Engine Hoist

- Boom Extends 30.7 inch to 41.7 inch
- Clevis grab hook with safety latch
- Six double ball bearing steel swivel casters
- Includes ram, chain and hook
- 3 Ton Hydraulic Ram
- Four Position Boom
- Easily adjusts for any size load



Pkg. Type: Brown Box

Item	UPC	Case Qty.	Case Wt.	Cubic Ft.
FSC1T	0 27077 07907 4	1	143.0	4.14

2 Ton Engine Hoist

- Lifts Most Standard V8 Automobile Engines
- 360° Rotating Head With 4 Adjustable Fingers
- Solid Steel 360° Swivel Crown Casters



Pkg. Type Color Label

Item	UPC	Case Qty.	Case Wt.	Cubic Ft.
CP8SS	0 27077 05495 8	1	200.0 lbs	5.0

1000 Lb Capacity Crane & Cable Winch

- Max Boom Height: 80" From Base
- Max Boom Length: 35-53-1/2"
- 3/16" Steel Box Tube Boom
- Base Swivels 360 Degrees
- Cable Extends 25 ft.
- Lifting Range 31" - 71"
- Mounts To Your Pick Up Truck Bed



Pkg. Type Color Label

Item	UPC	Case Qty.	Case Wt.	Cubic Ft.
BB07582	0 27077 07582 3	1	81.4 lbs	2.16

1000 Lb Capacity Pick Up Truck Crane

- Pick Up Engines, Generators, Scrap Material, Wood
- Mounts To Your Truck Bed
- Great For Moving Heavy Equipment
- Base Swivels 360°
- Removable Leg Allows For Easier Storage In Truck Bed After Use



Pkg. Type Color Label

Item	UPC	Case Qty.	Case Wt.	Cubic Ft.
BB07583	0 27077 07583 0	1	84.7lbs	3.06

20 Ton Air Bottle Jack

- 40" Hose With 1/4" NPT Fitting Included
- Lifting Range: 10 3/8" - 20" (With Screw Extended 3")
- Base Dimensions: 8 - 3/4" x 5 - 1/4"
- Two Way Operation: Air & Manual



Pkg. Type Color Box

Item	UPC	Case Qty.	Case Wt.	Cubic Ft.
AIRBJ20	0 27077 05806 2	1	37.0 lbs	0.6

1 Ton Electric Car Jack

- Compact Size Stores In Car For Emergencies
- Plugs Into Car 12 Volt DC Power Outlet
- Fully Automatic Push Button Controller With 12 Ft Cord
- 5" - 14" Lifting Height
- 2,000 Lb Capacity



Pkg. Type Color Sleeve

Item	UPC	Case Qty.	Case Wt.	Cubic Ft.
EJ212	0 27077 06539 8	1	44.0 lbs	2.12

1 Ton Scissor Car Jack

- Easily Raise & Lower Jack By Turning Crank
- Includes 19.5" Cranking Handle
- Portable & Easy To Use
- Heavy Duty Metal Frame
- 3.5" - 12" Lifting Height



Pkg. Type Color Box

Item	UPC	Case Qty.	Case Wt.	Cubic Ft.
SJ1	0 27077 07173 3	10	66.0 lbs	1.41

2 Ton Trolley Floor Jack

- Heavy Gauge, Reinforced Steel Frame
- Quick Release Valve
- Lifting Range: 5" - 12"
- 360° Swivel Saddle
- Two Rear 360° Swivel Ball Bearing Caster Wheels
- 15" Wheel Base



Pkg. Type Color Box

Item	UPC	Case Qty.	Case Wt.	Cubic Ft.
FJ2	0 27077 04605 2	1	16.0 lbs	0.4

Hydraulic Bottle Jacks

- Solid Cast Iron Base For Maximum Stability
- Hydraulic Bypass Prevents Ram Overtravel
- Adjustable Extension Screw Cap
- Cleated (Non-Slip) Screw Cap
- Replaceable Pump Cartridge



Pkg. Type Color Box

Item	UPC	Case Qty.	Case Wt.	Cubic Ft.
HBJ4	0 27077 00357 4	6	40.0 lbs	0.7
HBJ8	0 27077 00359 8	3	35.0 lbs	0.5
HBJ12	0 27077 00361 1	2	32.0 lbs	0.4

Heavy Duty Chain Hoists

- Heavy Duty Construction
- 1/4" Hardened Steel Chain
- 1 Ton Max Lift 8'
- 2 Ton Max Lift 8'
- 3 Ton Max Lift 8'



Pkg. Type Color Box

Item	UPC	Case Qty.	Case Wt.	Cubic Ft.
CHO1	0 27077 00383 3	1	18.0 lbs	0.3
CHO2	0 27077 05137 7	1	25.0 lbs	0.3
CHO3	0 27077 05732 4	1	41.0 lbs	0.5

3 Ton Hydraulic Floor Jack

- 2 Piece Handle
- 360° Swivel Saddle
- 360° Swivel Steel Casters
- 5" - 19" Lifting Range



Pkg. Type Color Box

Item	UPC	Case Qty.	Case Wt.	Cubic Ft.
SA20	0 27077 00371 0	1	74.0 lbs	2.2

Steel Snowmobile Dolly Set

- 1500 Lb Capacity
- 4 - 360° 2.5" Swivel Casters
- Powder Coat Paint Finish
- Keeps Snowmobile Off Garage Floor
- Measures 7.50" x 10" (2 pieces)
(4.5" high with casters)
- Measures 7" x 7" (1 piece)
(3.5" high with casters)



Pkg. Type Color Box

Item	UPC	Case Qty.	Case Wt.	Cubic Ft.
SMD1500	0 27077 08067 4	1/1	12.4 lbs	0.42

Hydraulic Table Cart

- Capacity: 660 lbs
- Rugged all-steel construction
- Powder-coated finish
- Foot controls for lifting and lowering from 10.5in. to 29.5in.
- Includes non-slip foot pedal
- Foot pedal operates hydraulic scissor lift tabletop

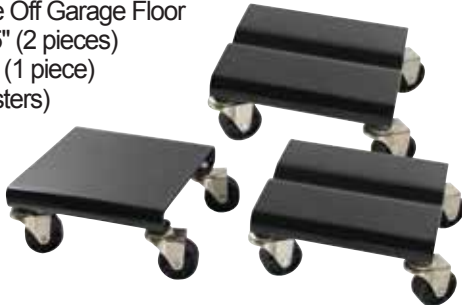


Pkg. Type Color Label

Item	UPC	Case Qty.	Case Wt.	Cubic Ft.
HTCART	0 27077 07938 8	1	123.0 lbs	5.61

Steel Snowmobile Dolly Set

- 1500 Lb Capacity
- 4 - 360° Swivel Casters
- Powder Coat Paint Finish
- Keeps Snowmobile Off Garage Floor
- Measures 8" x 8.25" (2 pieces)
(1" high without casters)
- Measures 8" x 7.5" (1 piece)
(1" high without casters)



Pkg. Type Color Box

Item	UPC	Case Qty.	Case Wt.	Cubic Ft.
SMDOLLY	0 27077 05824 6	2/1	34.0 lbs	0.55

1000 Lb Steel 2 Piece Car Dolly Set

- Fits Up To 14" Wide Tires
- 1000 Lb Capacity
- 3-1/2" Steel Casters
- Swivel Ball Bearing Casters
- Move Vehicle Backward, Forward & Sideways



Pkg. Type C.B.

Item	UPC	Case Qty.	Case Wt.	Cubic Ft.
CDOLLY	0 27077 05585 6	1	49.5 lbs	1.2

1/2 Inch Drive Deep Alloy Wheel Impact Socket Set

- 3 pieces : 21 mm - 19 mm - 17 mm
- Color Coded For Easy Identification
- Suitable For Using With Impact Tools
- Outside Protective Sleeve To Prevent Darr To Alloy Wheels
- Six-Point Socket IS Sleeved To Prevent Damage To Alloy Wheels
- Chrome Moly Alloy Steel
- Hardened, Tempered, & Anodized For Corrosion Resistance in Blow Mold Case



Pkg. Type Brown Box

Item	UPC	Case Qty.	Case Wt.	Cubic Ft.
ISOCKET3	0 27077 08045 2	10/1	20.5	0.50

1/2 Inch Drive 12-Point Spindle Deep Impact Socket Set

- 8 Piece x 29, 30, 32, 34, 35, 36, 38, 39 mm
- High duty sockets used in removing and installing axle nuts
- Most Popular Size Composition
- Rust-Resistant Black Oxide Finish, Better Antirust Effect
- Chrome Moly Alloy Steel
- Hardened, Tempered, & Anodized For Corrosion Resistance
- In Blow Mold Case



Pkg. Type Brown Box

Item	UPC	Case Qty.	Case Wt.	Cubic Ft.
ISOCKET8	0 27077 08046 9	4/1	44.5	1.3

A-Frame Shop Presses

- Powder Coated Finish
- Steel Construction
- 6 Ton
 - Operating Distance: 50mm - 110mm
 - Stroke: 130mm
- 12 Ton
 - Operating Distance: 90mm - 250mm
 - Stroke: 145mm
- 20 Ton
 - Operating Distance: 80mm - 420mm
 - Stroke: 145mm

Pkg. Type Brown Box

Item	UPC	Case Qty.	Case Wt.	Cubic Ft.
PRESSA6T	0 27077 07577 9	1	52.8 lbs	0.57
PRESSA12T	0 27077 07579 3	1	92.4 lbs	1.42
PRESSA20T	0 27077 075789	1	143.0 lbs	2.30



36" Metal Brake w/ Stand

- Metal Bending Brake For Metal Fabrication Work
- For Mild Sheet Steel Up To 12 Gauge Thick And Up To 36" Wide
- Bend angle capacity: 0 - 120 degrees
- Detachable Stand



Clarke #GE2036

Pkg. Type Color Box

Item	UPC	Case Qty.	Case Wt.	Cubic Ft.
BK36	0 27077 07164 1	1	177.0 lbs	5.22

Space Saver Metal Bender

- 44" Telescoping Handle
- Bends 5/16" x 1 1/4" Or 1/4" x 2" Mild Steel Or 5/8" Round Or Square Rod
- Includes 7 Round Dials: 1", 1 1/4", 1 1/2", 1 3/4", 2", 2 1/2", 3"



Pkg. Type Color Box

Clarke # GE2000

Item	UPC	Case Qty.	Case Wt.	Cubic Ft.
PBENDSS	0 27077 06023 2	1	57.0 lbs	2.12

5 Speed Drill Press

- 1/2" Chuck Capacity
- Cast Iron Table, Base And Drill Body
- Max Speed: 760-3,070 RPM
- Motor: 1/4 HP
- 2.4 AMP
- 300 Watt



Pkg. Type Color Box

Clarke # BT100A

Item	UPC	Case Qty.	Case Wt.	Cubic Ft.
DP5UL	0 27077 07165 8	1	37.4 lbs	1.25

16 Speed Drill Press

- Aluminum Table, Steel Base
- 5/8" Chuck Capacity
- Max Speed: 220-3,600 RPM
- With Laser Centering Device And Work Light
- Motor: 3/4 HP
- 6.6 AMP
- 120V / 60 Hz
- 11" Dia. Dry Round Table Tilts 90 Degrees Left & Right
- 550 Watts



Pkg. Type Color Label

Clarke # BT1029

Item	UPC	Case Qty.	Case Wt.	Cubic Ft.
DP16UL	0 27077 07166 5	1	123.0 lbs	6.37

20 Gallon Parts Washer

- Max. Pump Output: 192 GPH flow rate (w/pipe)
Max. Pump Output: 318 GPH flow rate (w/o pipe)
- Recirculates 2.6-3.2 GPM of Solvent
- Max. Output Through Spigot: 2.64-3.1 Gallons/min
- 20 Gallon Tank Capacity
- 12 Gallon Solvent Capacity



Pkg. Type Color Box

Item	UPC	Case Qty.	Case Wt.	Cubic Ft.
PWASH20	0 27077 07154 2	1	57.2 lbs	4.9

3.5 Gallon Parts Washer

- Heavy Duty Construction,
- Fusible Link, Steel Lid
- 120 Volts / 60 Hz
- 5 Gallon Tank Capacity
- 3.5 Gallon Solvent Capacity
- Removable Shelf
- Max. Pump Output: 18 GPM



Pkg. Type Color Box

Item	UPC	Case Qty.	Case Wt.	Cubic Ft.
PWASH35	0 27077 05316 6	1	14.0 lbs	1.5

Retractable Air Hose Reel

- Auto Rewind
- 300 PSI Rubber Hose
- 50 Ft./100 ft x 3/8 Inch
- Can be mounted on the ceiling, wall, or floor
- Quick and easy connection to your air compressor



Pkg. Type Color Box

Item	UPC	Case Qty.	Case Wt.	Cubic Ft.
AHAR50	0 27077 07732 2	1	38.0 lbs	2.34
AHAR100	0 27077 08203 6	1	60.0 lbs	2.73

40 Lb Capacity Portable Soda Blaster

- Safely & Easily Clean Metal or Strip Wood With Baking Soda
- Working Pressure: 35-90 PSI
- Air Consumption: 8.5 CFM
- Easy Clean Up: Just Hose Off Any Residue
- Use Harmless Baking Soda-Based Abrasive
- Includes Ceramic Nozzle, Pressure Gauge, 5 Ft Hose



Pkg. Type Color Box

Item	UPC	Case Qty.	Case Wt.	Cubic Ft.
SB40	0 27077 07731 5	1	19.8 lbs	1.66

20 Gallon Portable Parts Washer

- Includes 4 Asst. Ceramic Nozzles, Rubber Gloves, Drip Pan
- 20 Gallon Tank Capacity/ 12 Gallon Solvent Capacity
- Max. Pump Output: 192 GPH flow rate
Max. Pump Output: 318 GPH flow rate
- Tank Dimensions (LxWxH)
28.25" x 19" x 7.85"



Pkg. Type Color Box Clarke # MT1101

Item	UPC	Case Qty.	Case Wt.	Cubic Ft.
PPWASH20	0 27077 07168 9	1	81.4 lbs	8.55

15 Lb Capacity Portable Soda Blaster

- Working Pressure: 35-90 PSI
- Air Consumption: 8.5 CFM
- Use Harmless Baking Soda-Based Abrasive
- Includes Ceramic Nozzle, Pressure Gauge, 5 Ft Hose



Pkg. Type Color Box

Item	UPC	Case Qty.	Case Wt.	Cubic Ft.
SB15	0 27077 07730 8	1	12.1 lbs	0.93

40 Gallon Capacity Parts Washer

- Max. Pump Output: 192 GPH flow rate
Max. Pump Output: 318 GPH flow rate
- Max. Output Through Spigot: 2.64-3.1 Gallons/min
- Recirculates 2.6-3.2 GPM Of Solvent



Pkg. Type Color Box Clarke# MT1140

Item	UPC	Case Qty.	Case Wt.	Cubic Ft.
PWASH40	0 27077 07155 9	1	99.0 lbs	7.31

Bench Grinder Stand

- 31" H Stand With Adjustable 4" x 8" Drip Pan
- 5/8" Slots To Install Any Grinder Mounting Configuration



Pkg. Type Color Box Clarke # BT1022B

Item	UPC	Case Qty.	Case Wt.	Cubic Ft.
BGSTAND	0 27077 07163 4	1	38.5 lbs	1.06

110 Gallon Capacity Industrial Sandblast Cabinet

- Remove Paint, Rust & Oxidation
- Clean Extra Bulky Items
- 125 Max. PSI @ 5-25 CFM
- Includes 4 Assorted Ceramic Nozzles, 24" Rubber Gloves, Blasting Gun, Dust Collector Port, Hopper & Screen



Pkg. Type Brown Box

Item	UPC	Case Qty.	Case Wt.	Cubic Ft.
SBC420	0 27077 07349 2	1	363.0 lbs	46.96

90 Lb Gravity Feed Abrasive Blaster

- Includes 4 Ceramic Nozzles & Protective Hood
- Heavy Duty All Steel Construction
- Gravity Feed Design
- 90 lb. Capacity
- Pistol Grip Blast Gun
- 7 CFM @ 80 PSI
- 8 foot x 3/8" Blasting Hose
- 10" Rubber Wheels



Pkg. Type Brown Box Clarke # SB9015

Item	UPC	Case Qty.	Case Wt.	Cubic Ft.
SFSB90	0 27077 07158 0	1	19.8 lbs	3.14

Vertical Abrasive Blast Cabinet

- Easily Remove Paint, Rust & Oxidation
- Great For Cleaning Extra Bulky Items
- Includes 4 Assorted Ceramic Nozzles, Rubber Gloves, Blasting Gun, Dust Collector, Port, Hopper & Screen
- Tank Volume: 40 Lbs
- Air Consumption: 12 CFM
- Working Pressure 40-80 PSI
- 35" L x 22" W x 54.5" T



Pkg. Type Color Box

Item	UPC	Case Qty.	Case Wt.	Cubic Ft.
SBCNNS	0 27077 07556 4	1	110.2 lbs	0.91

50 Lb Capacity Abrasive Blaster

- 65 To 125 PSI
- 6 To 25 CFM
- Moves 80-90% Of Air Speed
- Includes Ceramic Nozzle, Pressure Gauge, 8 Ft. Hose, Filling Funnel, Water Trap, 6" Rubber Wheels, & Canvas Hood



Pkg. Type Color Box

Item	UPC	Case Qty.	Case Wt.	Cubic Ft.
SB10G	0 27077 06472 8	1	48.4 lbs	4.4

Abrasive Blast Cabinet

- Includes 4 Assorted Ceramic Nozzles, Rubber Gloves, Blasting Gun With Trigger, Dust Collector Port, Hopper & Screen
- Easily Remove Paint, Rust & Oxidation
- Tank Volume: 28.6 Lbs
- Working Pressure: 40-100 PSI
- Air Consumption: 5 - 9 CFM
- Includes Light
- 3.18 CU. FT. Work Area



Pkg. Type Color Box Clarke # SB9006

Item	UPC	Case Qty.	Case Wt.	Cubic Ft.
SBC90	0 27077 071566 6	1	44.0 lbs	6.0

100 lb Capacity Abrasive Blaster

- Shut Off Valve
- Working Pressure: 60-125 PSI
- Air Consumption: 6-25 CFM
- Spring Loaded, Auto-Closing Nozzle
- Includes 8 Ft. Hose, Funnel, Tape & Blasting Hood
- Connect To A Compressor, Put On Appropriate Hood & Respiratory Protection, Fill With Abrasive & Blast



Pkg. Type Color Box Clarke # SB9010A

Item	UPC	Case Qty.	Case Wt.	Cubic Ft.
SB20G	0 27077 06443 8	1	55.0 lbs	6.00

80 Grit Abrasive Garnet Sand/Glass Beads

- Great for Paint Removal, Cleaning, Etching & Surface Preparation

Pkg. Type BULK Clarke #AB2532



Item	UPC	Case Qty.	Case Wt.	Cubic Ft.
SBGARN	0 27077 07179 5	1	53.0 lbs	0.9
SBGLAS	0 27077 07178 8	1	53.0 lbs	0.9

Soda Blast Conversion Kit

- Convert either a 3/8" or 1/2" pressure blaster into a soda blaster.
- 6 Ft. hose with Brass fittings

Pkg. Type BULK Clarke #AB2531



Item	UPC	Case Qty.	Case Wt.	Cubic Ft.
SBCKIT	0 27077 07880 0	1	50.6 lbs	2.9



Adjustable stabilizing arms slide in/out for storage



All Purpose Hydraulic Lift

- Walk-Behind Manual Lift Works Great In Tight Locations & Small Warehouses
- Max 2,200 lbs Capacity
- Lift Height: Min 3.5"- Max 62"
- Distance of Fork : Min 11" Fork Width: 5"
- Adjustable Lifting & Lowering Speed
- Steering Radius: 48"
- Load Wheel: 3.15"
- Overall Length: 58" Max Width: 50.5"
- Overall Height: 78"

Pkg. Type Bulk

Item	UPC	Case Qty.	Case Wt.	Cubic Ft.
PSTACKER	0 27077 07934 0	1/0	522.5 lbs	

1 Ton Pallet Puller

- Pull Pallets To Rear Of Trailers For Easy Fork Truck Access
- Grip Range: 1.25 in. x 4 in.
- 2,200 Lbs. Max. Capacity
- As You Pull The Chain With The Forklift The Grip On The Pallet Plank Increases



Pkg. Type Color Label

Item	UPC	Case Qty.	Case Wt.	Cubic Ft.
PAPUL	0 27077 07637 0	2	28.6lbs	0.50

Heavy Duty Bench Grinders

- Sharpen Blades, Bits, Chisels
 - With Two Grinding Wheels (One Course/One Medium)
- | | |
|--|--|
| Clarke # BT1002 | Clarke # BT1004 |
| 6 Inch | 8 Inch With Lights |
| <ul style="list-style-type: none"> • 120V / 60 Hz, 1/2 HP • Speed 3550 RPM / 1.5 AMP • 1/2" Arbor | <ul style="list-style-type: none"> • 120V / 60 Hz, 3/4 HP • Speed 3550 RPM / 2.1 AMP • 3/4" Arbor |



Pkg. Type Color Box

Item	UPC	Case Qty.	Case Wt.	Cubic Ft.
BG6UL	0 27077 07161 0	1	27.5 lbs	0.78
BG8DL	0 27077 07171 9 (w/light)	1	28.0 lbs	1.06

Sandblast Replacement Gun

- Easy One Handed Operation
- Includes 3 Extra Nozzles 2.5mm, 3mm, 3.5mm
- Key Wrench Valve Stops Abrasive Flow When Lever Is Released
- Air Inlet 1/4" Air Jet



Pkg. Type Double Blister

Item	UPC	Case Qty.	Case Wt.	Cubic Ft.
SBRG	0 27077 07187 0	24	30.0 lbs	1.4

Abrasive Spot Blasting Kit

- Collection Bag Recycles Abrasive Media
- Includes Blasting Template & Nozzles For Many Shapes & Surfaces
- Air Consumption 8 CFM @ 90 PSI



Pkg. Type Double Blister

Clarke #SB9005

Item	UPC	Case Qty.	Case Wt.	Cubic Ft.
SBSBK	0 27077 07181 8	10	35.0 lbs	1.9

Hand Held Abrasive Blaster

- For Rust Removal & Small Projects
- Hand Held Design Includes 1/4" Quick Disconnect Hose Fitting
- Air Consumption 8 CFM @ 100 PSI



Pkg. Type Double Blister

Clarke # SB9004

Item	UPC	Case Qty.	Case Wt.	Cubic Ft.
SBGC	0 27077 07191 7	10	22.0 lbs	2.6

Parts Washer Pump

- Universal Design
- Recirculates 4.4 GPM Of Solvent
- Submersible Use Only
- 120V / 60 Hz 0.23 AMP



Pkg. Type Color Box

Item	UPC	Case Qty.	Case Wt.	Cubic Ft.
PWP20	0 27077 07186 3	32	57.0 lbs	3.2
PWP40	0 27077 07185 6	32	57.0 lbs	3.2

Sandblast Replacement Film

- Replacement Film Sheets For Blast Cabinet Windows
- For DIY & Home Shop Use
- 5 Pieces Per Package 21-1/2" x 10" 15-3/4" x 12"



Pkg. Type Color Label

1/2x10 Clarke #SB9007-04

Item	UPC	Case Qty.	Case Wt.	Cubic Ft.
SBFM3412	0 27077 07190 0	60	27.0 lbs	3.5
SBFM1210	0 27077 07189 4	60	36.0 lbs	3.5

3 Piece Ceramic Nozzles 5/6/7mm

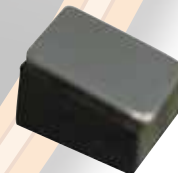


Pkg. Type Skin Card

Clarke #SB9007-3740

Item	UPC	Case Qty.	Case Wt.	Cubic Ft.
SBRN3A	0 27077 07188 7	120	20.0 lbs	1.0

Abrasive Alloy Replacement Pad



Pkg. Type Skin Card

Clarke #SB9008-0047B

Item	UPC	Case Qty.	Case Wt.	Cubic Ft.
SBPAD	0 27077 07184 9	120	8.0 lbs	1.0

4 Piece Replacement Nozzles



Pkg. Type Skin Card

Clarke #SB9008-0037

Item	UPC	Case Qty.	Case Wt.	Cubic Ft.
SBRN4A	0 27077 07183 2	120	13.0 lbs	1.8



Index

A			D			S		
AIRBJ20	Air Bottle Jack	3	DP16UL	Drill Press	5	SA20	Hydraulic Floor Jack	2
ARSEAT	Adjustable Roller Seat	3	DP5UL	Drill Press	5	SB10G	Abrasive Blaster	7
AHAR50	Air Hose Reel	6	DRCNR	Drain Cleaner	11	SB20G	Abrasive Blaster	7
B			E			SBC420		
BB07440	Trailer Light Kit	4	EJ212	Electric Car Jack	2	SBC90	Abrasive Blast Cabinet	7
BB07441	Towing Light Kit	4	ES4W	Engine Stand	2	SBCNNS	Abrasive Blast Cabinet	7
BB07580	Motorcycle Chock	4	F			SBFM3412	Replacement Film	9
BB07582	Crane & Cable Winch	2	FJ2	Trolley Floor Jack	2	SBGARN	Garnet Sand	7
BFRK4	Body Frame Repair Kit	3	H			SBGC	Abrasive Blaster	9
BG6UL	Bench Grinder	6	HBJ4	Hydraulic Bottle Jack	3	SBGH	Blasting Gun	9
BG8DL	Bench Grinder	6	P			SBGLAS	Glass Beads	7
BG8SS	Slow Speed Bench Grinder	6	PAPUL	Pallet Puller	8	SBPAD	Replacement Pad	9
BK36	Metal Brake w/Stand	5	PBENDSS	Metal Bender	5	SBRG	Replacement Gun	9
C			PPWASH20	Parts Washer	6	SBRN35	Ceramic Nozzles	9
CDOLLY	Car Dolly Set	4	PRESSA6T	A-Frame Shop Press	5	SBRN3A	Ceramic Nozzles	9
CHO11	Chain Hoist	3	PSTACK	Hydraulic Lift	8	SBRN4A	Replacement Nozzles	9
CP8SS	Engine Hoist	2	PSTACKER	Hydraulic Lift	8	SBSBK	Spot Blasting Kit	9
CREEP40	6 Wheel Creeper	3	PWASH20	Parts Washer	6	SFSB90	Abrasive Blaster	7
CTD009	O-Ring Asst	10	PWASH35	Parts Washer	6	SJ1	Scissor Car Jack	2
			PWASH40	Parts Washer	6	SMDOLLY	Snowmobile Dolly Set	4
			PWP20	Parts Washer	9	T		
			PWP40	Parts Washer	9	TOW14	Utility Chain	3



AUTOMOTIVE, TOOLS & SHOP

EQUIPMENT & ACCESSORIES

950 Hoff Road

O'Fallon, MO 63366

Ph: 636.532.9888 Fx: 636.537.1055

