

PWASH1

20 Gallon Parts Washer

Assembly & Operating Instructions



READ ALL INSTRUCTIONS AND WARNINGS BEFORE USING THIS PRODUCT.

This manual provides important information on proper operation and maintenance. Every effort has been made to ensure the accuracy of this manual. We reserve the right to change this product at any time without prior notice.

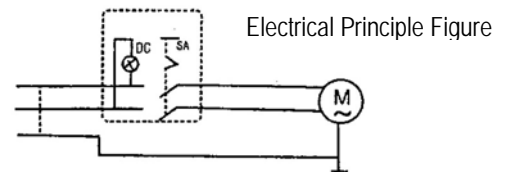
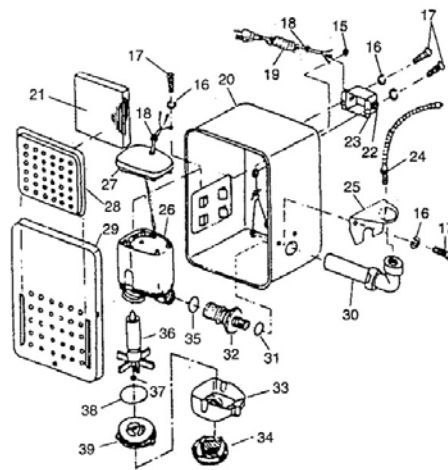
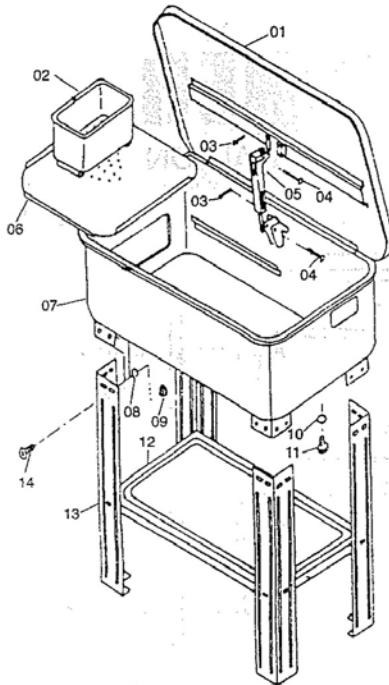
STOP! DO NOT RETURN THIS PRODUCT TO THE RETAILER.

Questions? Problems? CONTACT BUFFALO TOOLS.

If you experience a problem or need parts for this product, visit our website <http://www.buffalotools.com> or call our customer help line at **1-888-287-6981, Monday-Friday, 8 AM - 4 PM Central Time**. A copy of the sales receipt is required.

20 Gallon Parts Washer PWASH1 Assembly and Operating Instructions

COMMON SENSE AND CAUTION ARE FACTORS WHICH CANNOT BE BUILT INTO ANY PRODUCT. THESE FACTORS MUST BE SUPPLIED BY THE OPERATOR.



Parts List

ITEM	QTY	DESCRIPTION	ITEM	QTY	DESCRIPTION	ITEM	QTY	DESCRIPTION
01	1	COVER	15	5	NUT	29	1	PUMP HOUSING COVER
02	1	WORK BASKET	16	5	SPRING WASHER	30	1	ELBOW
03	4	SPRING PAN	17	5	SCREW	31	1	PLASTIC WASHER
04	4	PIN	18	2	STRAIN RELIEF	32	1	SPIGOT
05	1	SAFETY PLATE	19	1	CABLE AND PLUG	33	1	LOCATION OF KNOB
06	1	WORK SHELF	20	1	PUMP HOUSING	34	1	FILTER
07	1	BODY	21	1	SCREEN	35	1	SEAL RING
08	24	SPRING WASHER	22	1	SWITCH	36	1	IMPELLER
09	24	NUT	23	1	SWITCH BOX	37	1	SHIN WASHER
10	1	O-RING	24	1	FLEXIBLE PIPE	38	1	SEAL RING
11	1	PLUG	25	1	ELBOW SEAT	39	1	IMPELLER HOLDER
12	1	SHELF	26	1	PUMP BODY			
13	4	LEG	27	1	PUMP BACK COVER			
14	24	PAN SCREW	28	1	FILTER COVER			

20 Gallon Parts Washer PWASH1 Assembly and Operating Instructions

Features

20 Gallon Tank Capacity / 12 Gallon Solvent Capacity

Black Powder Coat Paint Finish / Heavy-Duty Steel Construction

120 Volts / 60 Hz Water Pump

Fusible Link Arm & Steel Lid

Max. Pump Output: 192 GPH flow rate (with flexible pipe)

Max. Pump Output: 318 GPH flow rate (without flexible pipe)

Recirculates 2.6-3.2 GPM of Solvent

Flexible Chrome Plated Nozzle Adjusts For Full Coverage

Overall Dimensions: L x W x H 29 15/16" x 21 1/4" x 34 5/8"

Tank Dimensions: L x W x H 31 1/8" x 21 5/8" x 12 19/32"

Max Output Through Spigot 2.64-3.1 Gallons/min

WARNING Read carefully before operating.

1. Do not over fill solvent. Fill to just below level of parts tray.
2. Do not use any solvent with a flashpoint below 150° F.
3. Know your solvents. Do not use any highly volatile, flammable or combustible solvents, or fuels such as gasoline, diesel or toluene. Only use non-corrosive water based solvents.
4. Use only in a well ventilated area.
5. Do not operate while smoking.
6. Do not operate near heat sources such as heaters, sparks, open flame, etc.
7. Should fire occur in parts washer, do not attempt to move parts washer.
8. Lid is on a fusible link and will fall automatically to extinguish flame.
9. Do not modify or jam lid to keep lid locked in an open position.
10. Replace damaged parts immediately.
11. Use only on grounded 115 Volt, 60Hz, outlet.

Assembly

1. Remove contents from carton and inspect for any damage.
2. Lay machine on the lid. Place flat on the floor.
3. Mount four legs (13) to bottom of base using Pan Screws (14) and Washers (08) and Nut (09).
4. Mount Shelf (12) to legs (13) using Pan Screws (14) and Washers (08) and Nut (09).
5. Stand machine up (be careful to hold the lid closed).
6. Place work shelf and basket into the machine.
7. Mount pump assembly into slot on the side of the machine. Place filter screen in position.
8. Attach flexible hose to pump assembly.

Product Use

Plug machine into standard 115 Volt / 60 Hz grounded outlet and fill with proper amount of fluid.

Fill the tank with the proper cleaning solution, below the crease in the body. Immerse the pump in liquid while operating. Fluid should be replaced, and parts washer cleaned, on a regular basis. Avoid solvent contact with skin and eyes. Chlorinated solvents, such as 1-1-1 Trichloroethane and Methylene Chloride (also known as Methyl Chloride) can chemically react with aluminum and may explode. Many tools and pieces of equipment contain aluminum. Place tools to be cleaned into the cleaning solution and turn power on. Fluid should be flowing from the spigot. When the tool is clean, turn the power switch off. Remove the tool from the cleaning solution and air dry or wipe with clean towel.

Maintenance

Warning: Always unplug the Power Cord from the electrical outlet before performing any maintenance.

Replacing Cleaning Solution

1. Replace the cleaning solution when it becomes dirty.
2. Place an empty container on the lower Shelf that is large enough to hold all of the liquid which is in the Body.
3. Remove the Plug from the bottom of the Body. The fluid should drain into the empty container on the Shelf below.
4. Dispose of the used cleaning solution properly. Do not drain the cleaning solution into the street drains, house drains, or into the earth. Contact your local waste management officials for proper disposal methods.
5. Replace the Plug then refill the Body with new cleaning solution.

When the cleaning solution flow is reduced or stopped, it may be necessary to clean the Flexible Pipe (24).

Cleaning the Flexible Pipe and Impeller

1. Make certain that the indicator light on the Switch Box is on.
2. Turn the Switch to the OFF position.
3. Unplug the Power Cord from the electrical outlet.
4. Remove the Flexible Pipe from the Elbow. Drain the pipe, inspect its interior for debris. Use compressed air to blow clean.
5. Remove the Pump Housing Cover by removing the Screws, then clear and remove any foreign matter from the impeller.
6. Reattach the Flexible Pipe to the Elbow, and replace the Pump Housing Cover.